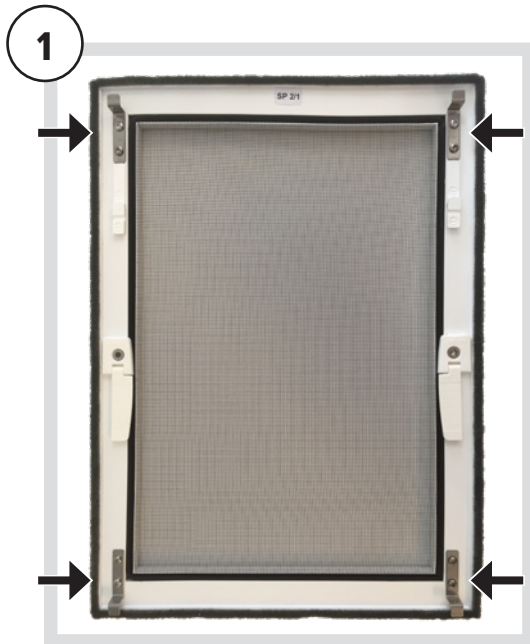
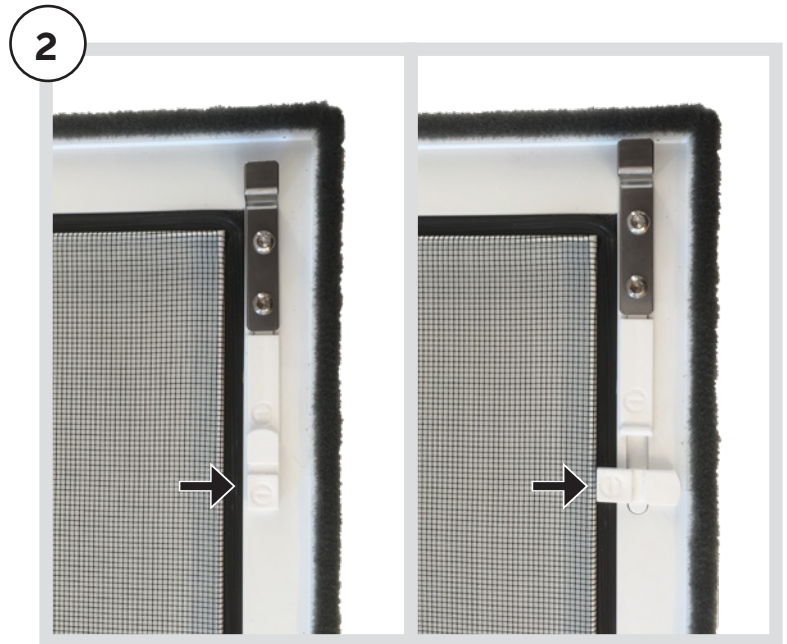


# Mosquito net for inward opening window

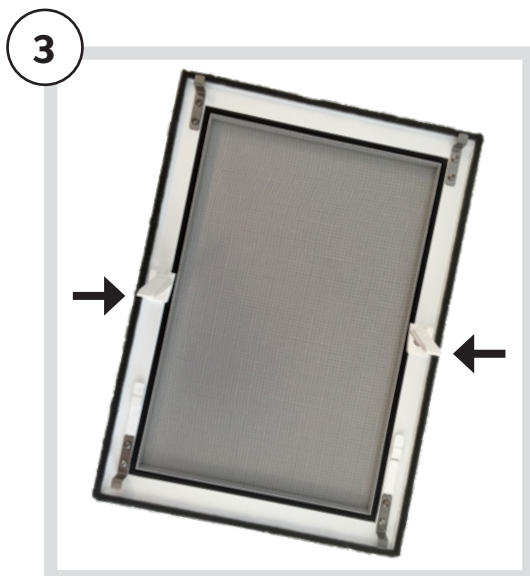
## Installation of mosquito nets



Mount the brackets in the four existing holes on the mosquito net frame with the supplied screws, 2 per bracket.



Turn the lower part of the plastic fitting 90° so that the fitting moves upwards and becomes resilient. The springy fittings should be upwards on the frame.



Grab the plastic handles in the center of the mosquito net frame, angle the frame and bring it out through the window frame. Then push the frame upwards against the aluminum edge of the window frame. Then put the frame in the correct position with the lower fittings around the aluminum edge.

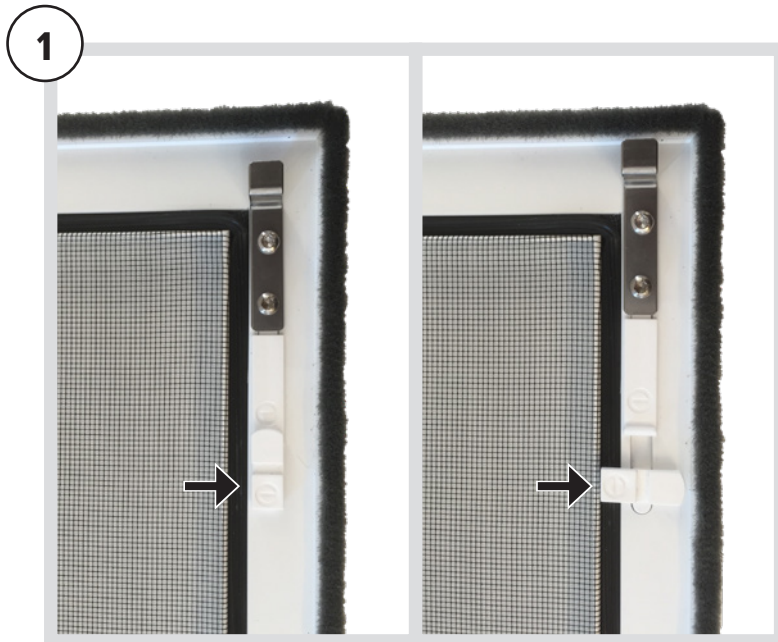


Once the frame is in place, it is locked in place by turning back the plastic fitting so that the hooks do not spring.

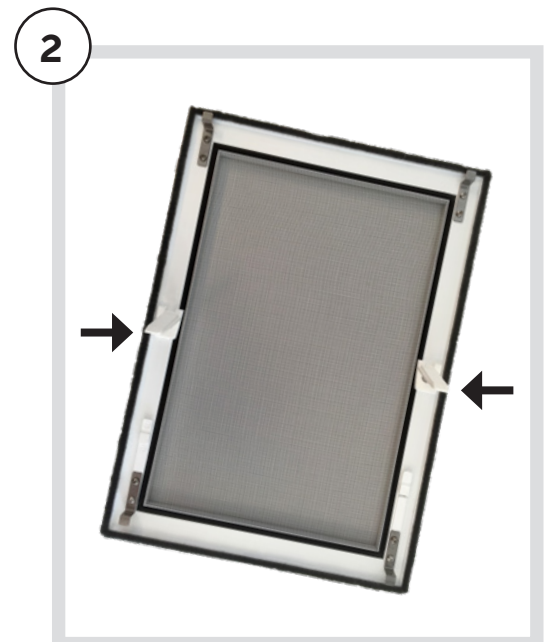
DISASSEMBLY

# Mosquito net for inward opening window

## Disassembly of mosquito nets



Start by turning the two plastic fittings 90°. Now the fittings are once again resilient.



Grabbing the handles in the center of the frame, press the the frame upwards to release it from the lower fittings. Angle the frame so that it comes out through the frame of the window.

## Handling and maintenance of mosquito nets

*Take care of and use your mosquito net properly. This reduces wear and tear and increases its lifespan.*

### **Maintain and clean your mosquito net**

Wipe the net with a lightly moistened cloth, that's all the maintenance needed.

### **Brush strips**

Vacuum the brush strips carefully to avoid scratching the aluminum.

*We are not responsible for errors. We reserve the right to make changes.*